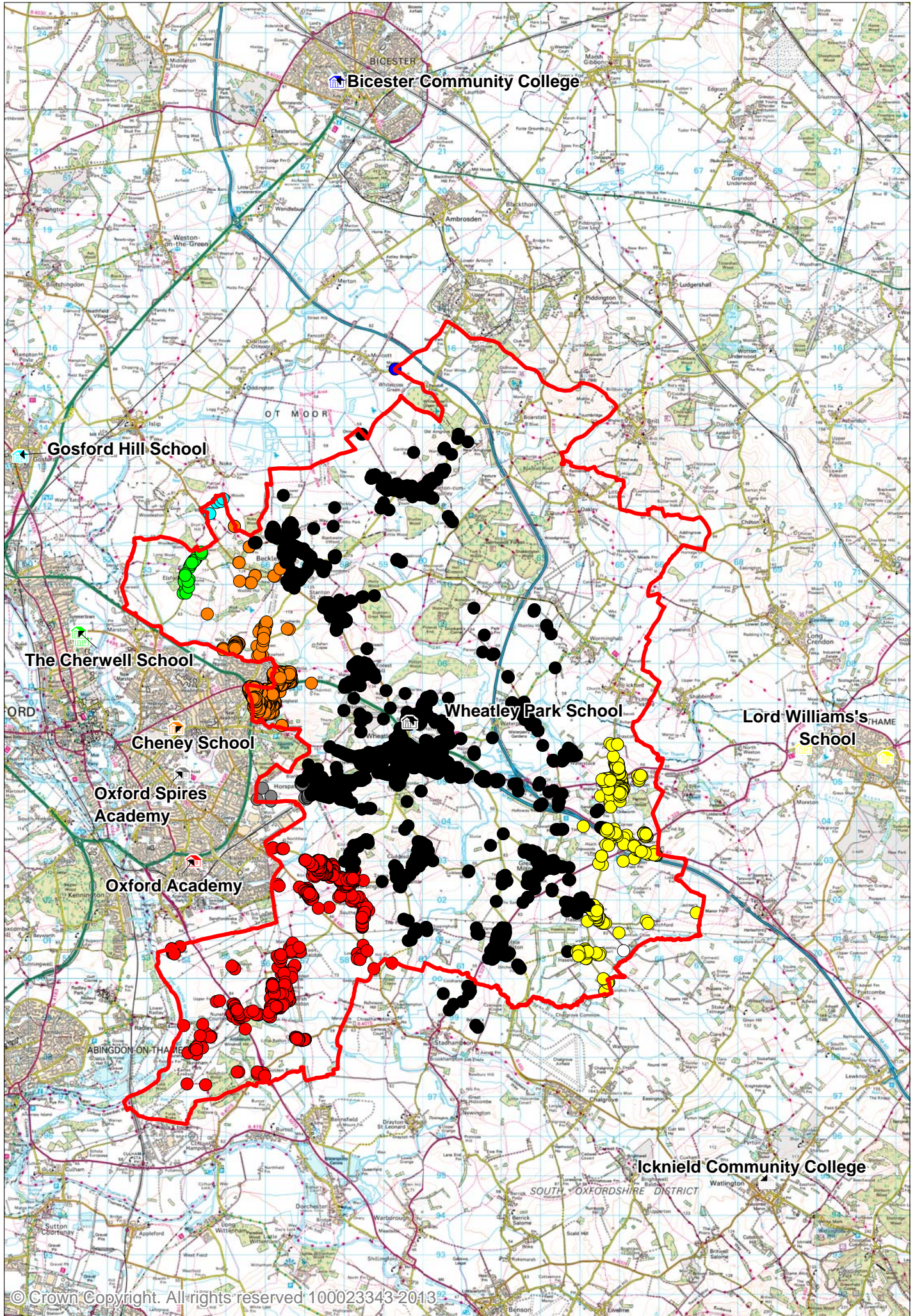


Distribution of nearest school for all Oxfordshire addresses for Wheatley Park School





## **Wheatley Park School, Holton**

All addresses within the designated (catchment) area of Wheatley Park School colour-coded to their nearest secondary school and some addresses outside the designated (catchment) area of Wheatley Park School which are closer to Wheatley Park School than to any other secondary school.

Addresses within the designated (catchment) area:

●	Wheatley Park School	4,512
●	Bicester Community College	1
●	Cheney School	1,507
●	The Cherwell School	42
●	Gosford Hill School	4
○	Icknield Community College	1
●	Lord Williams's School	447
●	The Oxford Academy	1,006
●	Oxford Spires Academy	50
	<b>TOTAL</b>	<b>7,570</b>

1. Measurements for Lord Williams's School are to the Upper School (Oxford Road) as this is the main administrative centre for the school. Already Oxfordshire County Council transports children from Tiddington and Rycote areas to Lord Williams's School (both sites) on closest school grounds, because the main administrative site is closer than the designated area school (Wheatley Park School) even if the students are studying at Lord Williams's (Lower) School on Towersey Drive which might be further away.
2. Measurements for The Cherwell School are to the north site as this is the main administrative centre for the school. Given that this school is often over-subscribed from applications within the school's designated area and these addresses are outside the designated area, it would be unlikely that applications from these addresses would be successful for a place at The Cherwell School. In this case, the second closest school for all 42 addresses is Cheney School.

There are 11 addresses outside the designated (catchment) area of Wheatley Park School which are closer to Wheatley Park School than any other secondary school. These addresses are in the designated (catchment) area of Icknield Community College (Watlington).