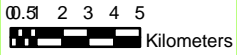
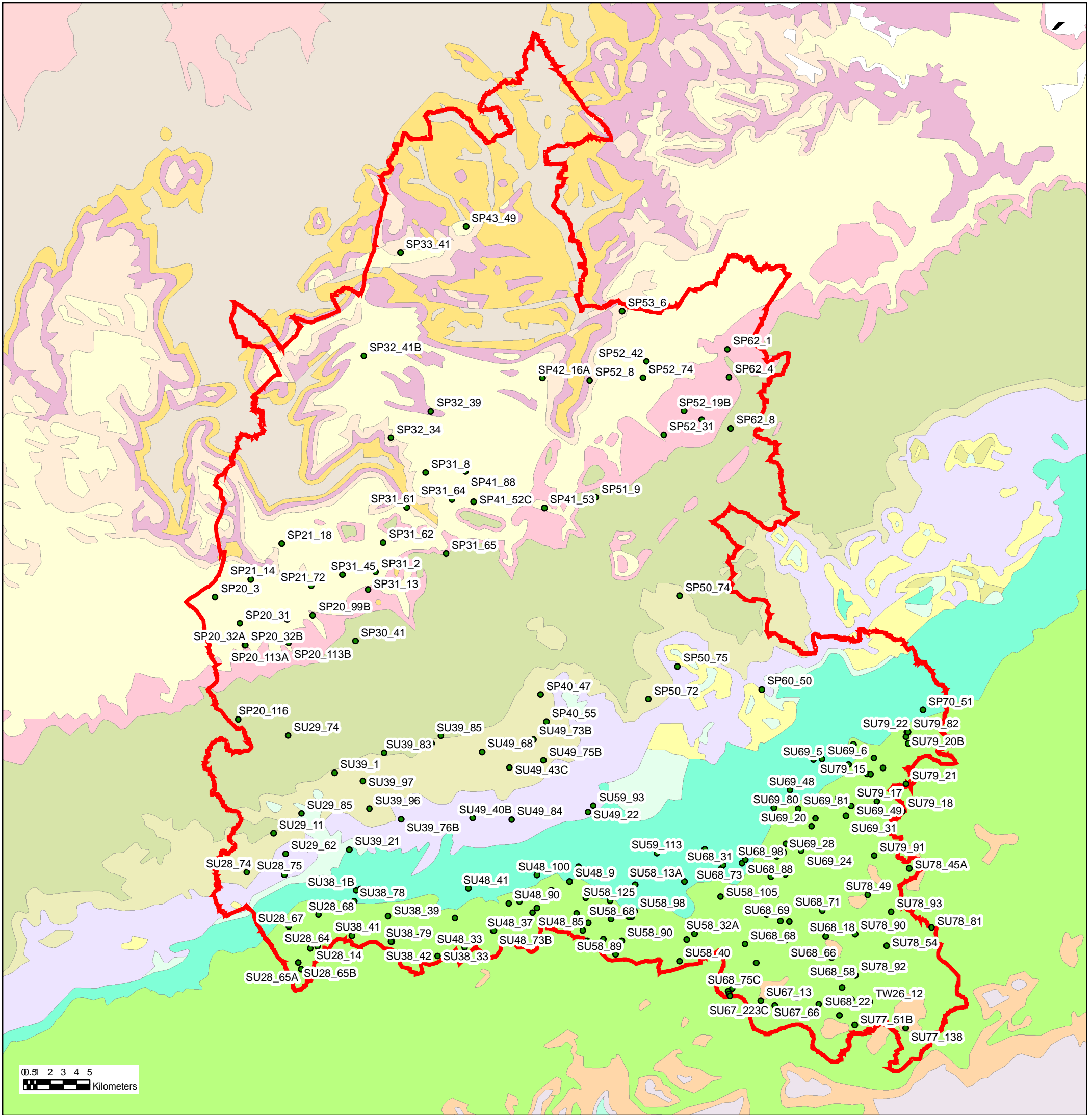


Bedrock Geology of Oxfordshire County Council



© British Geological Survey © Crown Copyright. All rights reserved. Environment Agency. 100026380, 2010.

Legend

- Groundwater_Level_Sites
- Oxfordshire_County
- Open Water
- Barton, Bracklesham and Bagshot Beds
- London Clay
- Oldhaven, Blackheath, Woolwich, and Reading and Thanet beds
- Chalk including Red Chalk
- Upper Greensand and Gault
- Lower Greensand
- Hastings Beds
- Purbeck Beds
- Portland Beds
- Kimmeridge Clay and Amptill Clay
- Amptill Clay, Kimmeridge Clay and Corallian
- Corallia
- Oxford Clay and Kellaways Beds
- Cornbrash
- Great Oolite
- Inferior Oolite
- Lenham Beds
- Llandovery
- Upper Lias
- Lower Lias
- Middle Lias
- Norwich Crag, Red Crag and Chillesford Clay
- Triassic mudstones including Keuper Marl, Dolomitic Conglomerate and Rhaetic)
- Weald Clay
- Open Water
- Barton, Bracklesham and Bagshot Beds
- London Clay
- Oldhaven, Blackheath, Woolwich, and Reading and Thanet beds
- Chalk including Red Chalk
- Upper Greensand and Gault
- Lower Greensand
- Hastings Beds
- Purbeck Beds
- Portland Beds
- Kimmeridge Clay and Amptill Clay
- Amptill Clay, Kimmeridge Clay and Corallian
- Corallia
- Oxford Clay and Kellaways Beds
- Cornbrash
- Great Oolite
- Inferior Oolite
- Lenham Beds
- Llandovery
- Upper Lias
- Lower Lias
- Middle Lias
- Norwich Crag, Red Crag and Chillesford Clay
- Triassic mudstones including Keuper Marl, Dolomitic Conglomerate and Rhaetic)
- Weald Clay