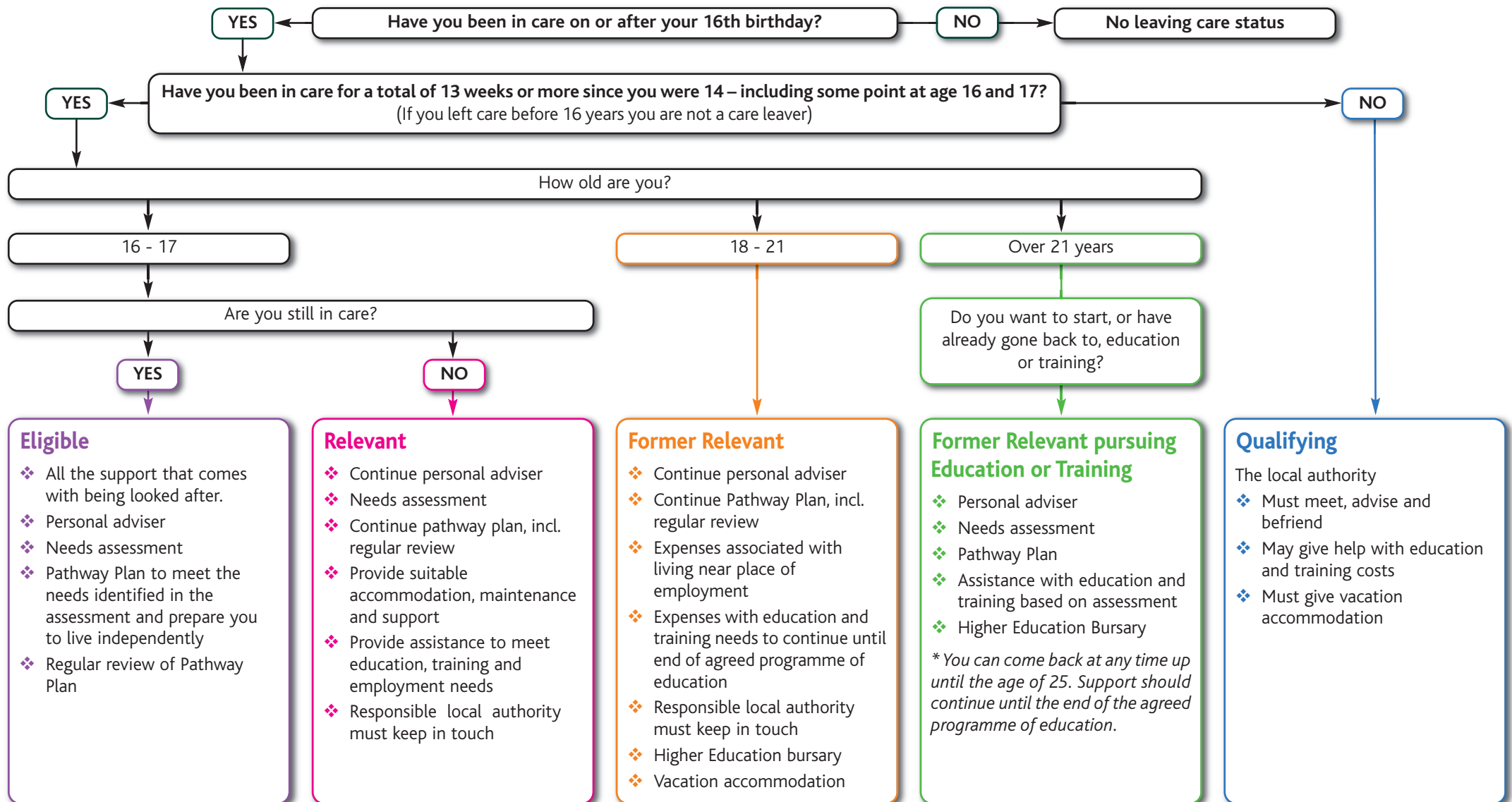




## Are you a care leaver? Categories of care leavers and entitlements (courtesy of Catch 22)



### Eligible

- ❖ All the support that comes with being looked after.
- ❖ Personal adviser
- ❖ Needs assessment
- ❖ Pathway Plan to meet the needs identified in the assessment and prepare you to live independently
- ❖ Regular review of Pathway Plan

### Relevant

- ❖ Continue personal adviser
- ❖ Needs assessment
- ❖ Continue pathway plan, incl. regular review
- ❖ Provide suitable accommodation, maintenance and support
- ❖ Provide assistance to meet education, training and employment needs
- ❖ Responsible local authority must keep in touch

### Former Relevant

- ❖ Continue personal adviser
- ❖ Continue Pathway Plan, incl. regular review
- ❖ Expenses associated with living near place of employment
- ❖ Expenses with education and training needs to continue until end of agreed programme of education
- ❖ Responsible local authority must keep in touch
- ❖ Higher Education bursary
- ❖ Vacation accommodation

### Former Relevant pursuing Education or Training

- ❖ Personal adviser
  - ❖ Needs assessment
  - ❖ Pathway Plan
  - ❖ Assistance with education and training based on assessment
  - ❖ Higher Education Bursary
- \* You can come back at any time up until the age of 25. Support should continue until the end of the agreed programme of education.*

### Qualifying

- The local authority
- ❖ Must meet, advise and befriend
  - ❖ May give help with education and training costs
  - ❖ Must give vacation accommodation